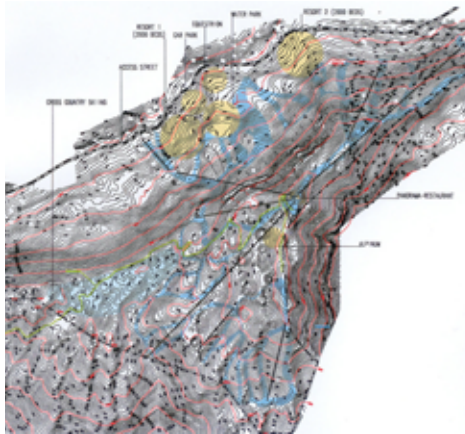


## SKIING AREAS



# PROJECTS

## PRELIMINARY ENVIRONMENTAL IMPACT ASSESSMENT JABALNA SKI RESORT (LEBANON)

The Preliminary Environmental Impact Assessment (EIA) prepared within a tourism development project is an integrated part of the design process for the Jabalna Mountain Ski Resort in Lebanon, where more than 850 apartments and 5 hotels are scheduled to be built. 8 ski lifts, 48 hectares of ski slopes and a water park are planned to become the main tourism attractions in this area.

### project proposal

- ski resort with 868 apartments and 5 hotels, in total about 4000 beds
- public parking area for 437 cars
- 8 ski lifts and 48 hectares of ski slopes
- about 8 km of new road
- water park

### Client

The Municipality of Kafarselwan, Lebanon  
2002

