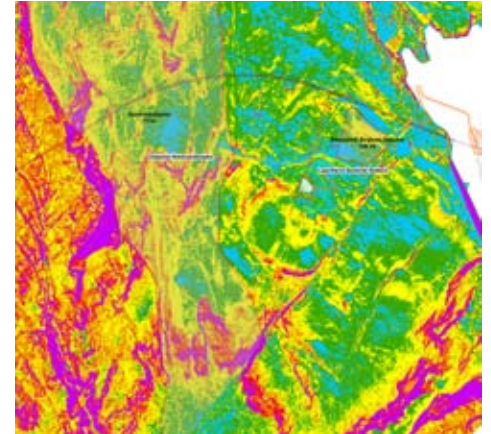
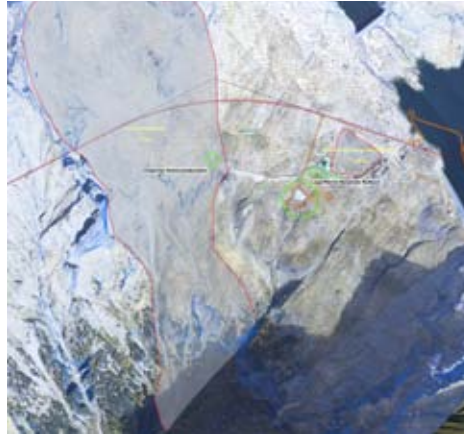


SPATIAL AND REGIONAL PLANNING



PROJECTS

AVALANCHE STUDY FOR THE PUMPED STORAGE HYDRO POWER PLANT REISSECK II KOLBNITZ – REISSECK / AUSTRIA

Project description

Our experts prepared an avalanche study in the scope of the Environmental Impact Assessment (EIA) for the Reißbeck II pumped storage hydro power plant project. Extensive site investigations and 3D GIS terrain modeling were carried out in the process of hazard potential assessment. A comprehensive package of measures has been compiled for the protection of the construction site and the projected power plant.

Services

- Site investigations, GIS data analysis, 3D terrain analysis
- Assessment / calculation of the hazard potentials
- Preparation of proposal for avalanche protection measures

Client

Verbund Austrian Hydro Power AG
2009

