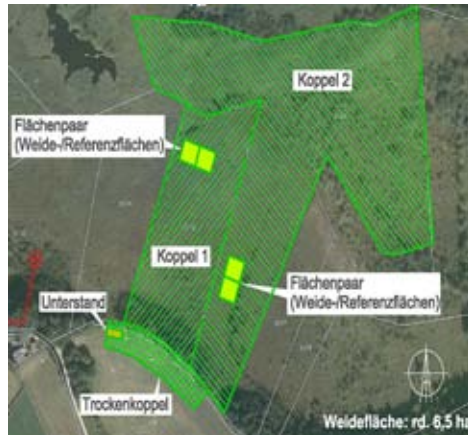


LANDSCAPE ECOLOGY, PROTECTED AREA MANAGEMENT



PROJECTS

PROTECTED AREA DEVELOPMENT RAMSAR SITE "MOOR AND LAKELAND AREA KEUTSCHACH - SCHIEFLING" CARINTHIA / AUSTRIA

Project description

The impact of grazing on the composition of the vegetation is to be investigated in the scope of the PANet activity "Implementation of the Management Plan Keutschacher Moos". A water buffalo grazing project has been started to provide comprehensible results to clarify, whether the grazing of wetlands represents a practicable ecological alternative to the rather costly maintenance measures like mowing, clearing, or flail mowing. A botanical monitoring has been run from the start of the project.

Services

- Permanent care and winter feeding of the water buffalo herd
- Botanical monitoring of selected test areas
- Communication and public relation activities

Client

Office of the Carinthian Government, Department for Regional Planning, Sub-Department for Nature Conservation
2007-2012



Dipl. Ing. Andreas Berchtold
landscape architect

AUSTRIA, 9020 Klagenfurt, Benediktinerplatz 3, Tel. +43 (0)463/513192, office@berchtold-lp.at, www.berchtold-lp.at