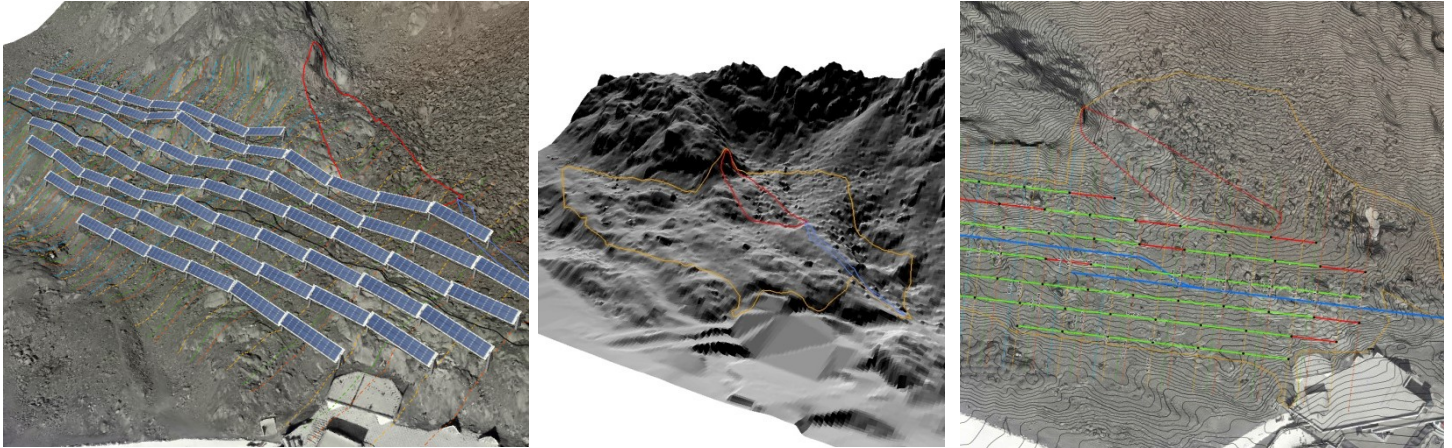


## TERRAIN ANALYSIS AND VISUALIZATIONS



# PROJECTS

## PHOTOVOLTAIC POWER PLANT PITZTALER GLETSCHER

### Project characteristics

The ropeway company Pitztaler Gletscherbahnen installed a photovoltaic plant with 3.500 modules at 2.700 meters above sea level in summer 2015. Extensive 3-D analyses were necessary to gain the required data for the positioning of the plant and the mapping of the foundation points in difficult terrain. Further analyses were dealing with the minimizing of shading effects in adherence with the required distances between the rows of the installed solar panels. Finally a 3D visualisation has been provided for presentation and promotion purposes.

### Services

- 3D-terrain analysis
- Visualisation
- Preparation of longitudinal and transverse sections from the latest laserscan
- Derivation of coordinates for the mapping of foundation points

### Client

Haslinger Stahlbau GmbH  
2015



**Dipl. Ing. Andreas Berchtold**  
landscape architect

AUSTRIA, 9020 Klagenfurt, Benediktinerplatz 3, Tel. 0463/513192, office@berchtold-lp.at, www.berchtold-lp.at